

- track
- analyse
- forecast

GAIN MORE VISIBILITY OF YOUR ASSETS

Save costs with Visimore® Asset Management System. Know exactly how many units are in use and where they are. Manage your assets and make every of them work for you! Visimore® is a complete solution including monitoring and analytics, data management and sensor technology.

Visimore® uses a combination of the most appropriate sensor technologies to gather critical data to drive performance improvements related to your investment in load carriers. As sensor technology evolves Visimore can be configured to use a single or multiple technologies.



Benefits

- Secure operations by minimising asset out of stock
- Optimise your fleet size
- Increase utilisation rate
- Minimise asset losses
- Increase quality of historical data on assets

Interested? Please contact your local sales person or contact-khw@k-hartwall.com to hear more!

“It is an attractive technical solution because the infrastructure costs are low compared to other technologies. All postal operators, and actually any operator with load carriers are struggling with the same challenge. Nobody has solved that economically so far.”

- Asset Manager Lasse Mattsson at Posti -

Easy-to-install sensors and cloud-based data

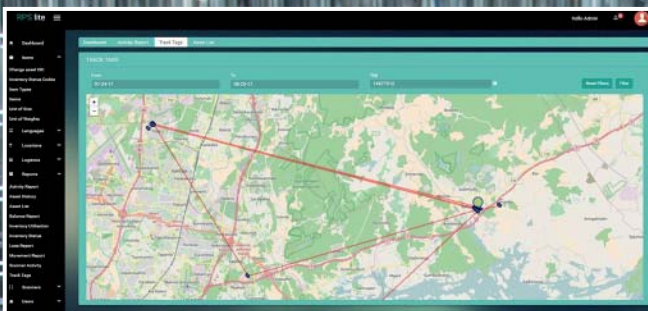
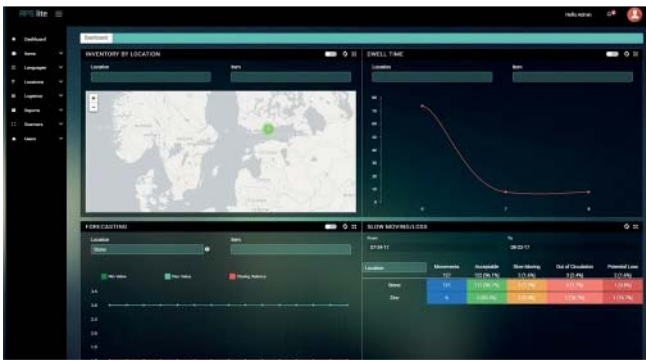
Visimore® is a truly new way to proactively manage the assets in your supply chain. It provides KPI's that ensure optimal usage of your load carriers to drive performance improvements. This industry specific solution has been designed to be configurable to address your business requirements with the least amount of disruption to your current operations. It will provide high definition visibility to your assets while simultaneously collecting valuable supply chain information.

Interested? Please contact your local sales person or contact-khw@k-hartwall.com

How it works

- Visimore® tags are added to your assets
- DC network is easy to set up in a matter of hours.
- Assets are tracked both inside your DC with the network and outside by using a mobile application.
- This high quality and timely data is translated into meaningful business intelligence helping you managing your assets.

visimore®



K.HARTWALL

Logistics Efficiency through Innovation